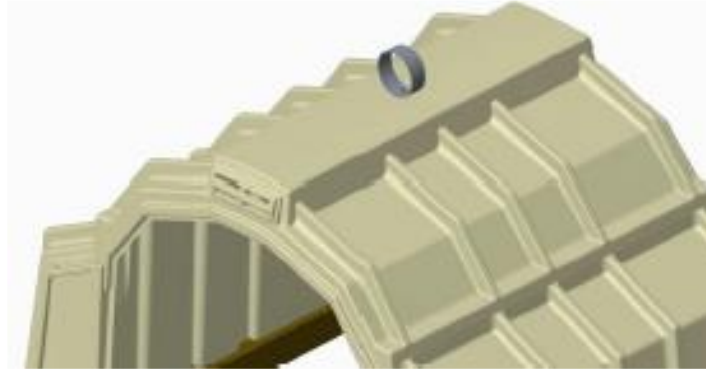




## 54|98 Lifting Device Assembly Instructions



### Calf-Tel 54|98 Lifting Device Bill of Material:

Item	Item Number	Description	Qty
1	CT-6192	Lifting Bracket and Lifting Ring	1
2	CT-HDWE-004	(2) 1/2-13 x 1-1/2 Bolts, (5) 1.0 Washers, and (3) 1/2 -13 Nuts	1

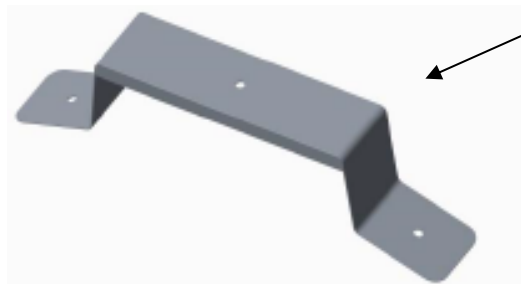
### Tools Needed:

1. 9/16" Drill Bit
2. Drill
3. 1/2" Deep Well Socket
4. 1/2" Wrench



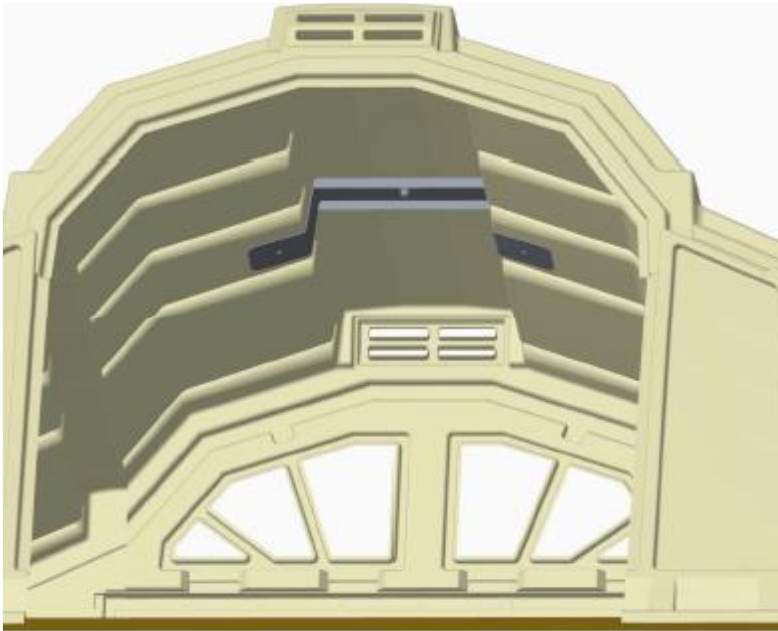
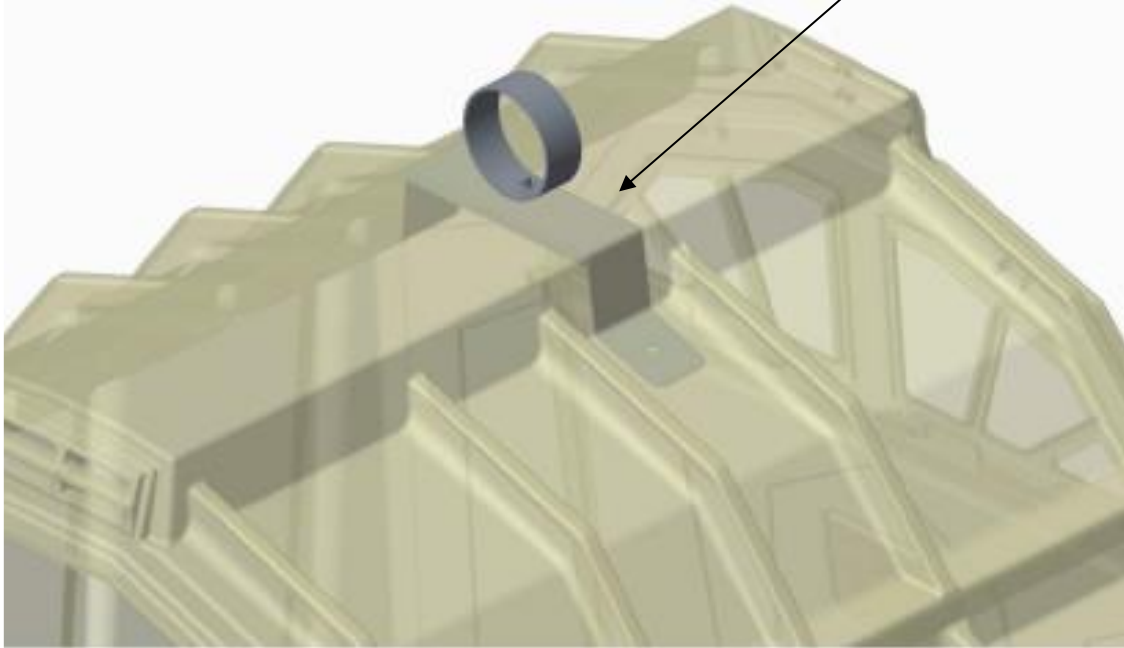
Lifting Ring

Lifting Bracket



Hutch is shown transparent for better visual perspective of lifting bracket assembly.

Lifting bracket mounts on inside of hutch.



Looking from inside the hutch, drill the center hole in roof measuring 26.50" from back inside roof edge. Then, drill the other 2 holes using a 9/16 drill.

**Note:** The bracket can be used as a drill guide as it conforms to the shape of the inside of the roof.



Assemble the lifting ring and bracket together using the supplied hardware kit (CT-HDWE-004).

