



# CT-6191 Pen Wall Attachment Assembly Instructions

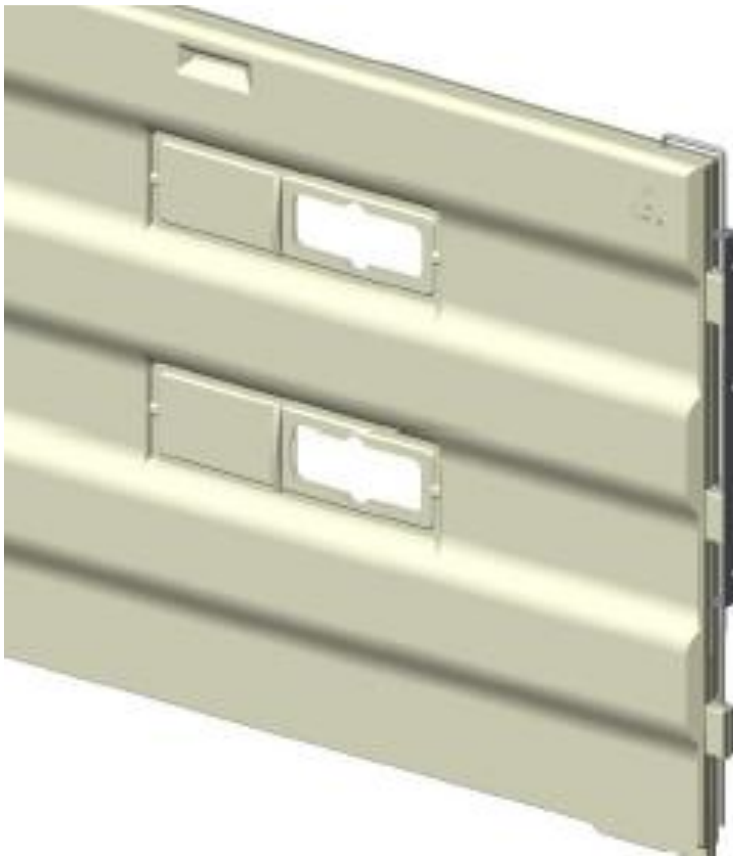
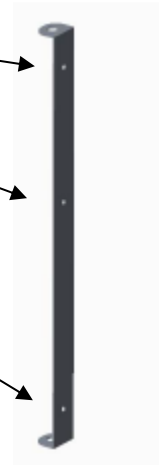
## CT-6191 Pen Wall Attachment System Bill of Materials:

Item	Item Number	Description	Qty
1	CT-6191	Pen Wall Bracket	1
2	CT-HDWE-003	1/4 x 2.5" Lag Screw	3

### Tools Needed:

- 5/16" Socket

Using (3) CT-HDWE-003 LAG screws, anchor wall bracket to wall.



Bottom of bracket is mounted 17.0" up from floor.

Panel brackets are to be mounted on 46.25" centers.