

Revised October 2021



## **Elevated Calf System**

### Assembly Instructions for Installation





Item	Item Number	Description	Qty
1	CT-10000	ECS Hutch	1
2	CT-10001	ECS Front	1
3	CT-10002	ECS Cover	1
4	CT-10003	Back Vent Covers ECS	1
5	CT-10006	Chute Bottle Holder	1
6	CT-10008	Back Vent L-Rod ECS	1
7	CT-10011	Cover – Lock ECS	1
8	CH-5113	Washer, Fender Washer (Eyebolt) With Hardware	4
9	CT-HDWE-019	Eyebolt, 5/16 x 1.0	1
10	CT-HDWE-007	Washer, 5/16 Flat SAE	26
11	CT-HDWE-009	Screw, 5/16-18 x 1.0 Hex Cap	11
12	CT-HDWE-015	Nut, 5/16-18 Top Lock Hex	14
13	CT-HDWE-016	Push Nut 7/8	

**Tools Needed:**

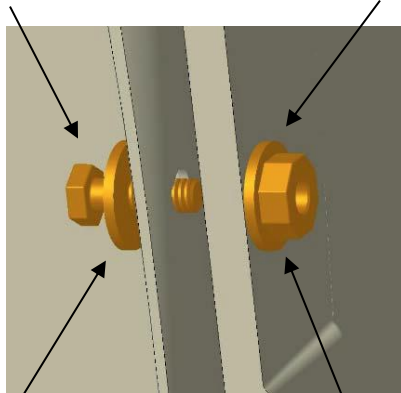
1. 7/16 Open End Wrench
2. 7/16 Socket and Ratchet
3. 5/16 Socket and Ratchet
4. 1/2 Open End Wrench
5. 1/2 Socket and Ratchet
6. Drill And 3/8 Drill Bit



## Assembly of CT-10001 Front

CT-HDWE-009

CT-HDWE-007



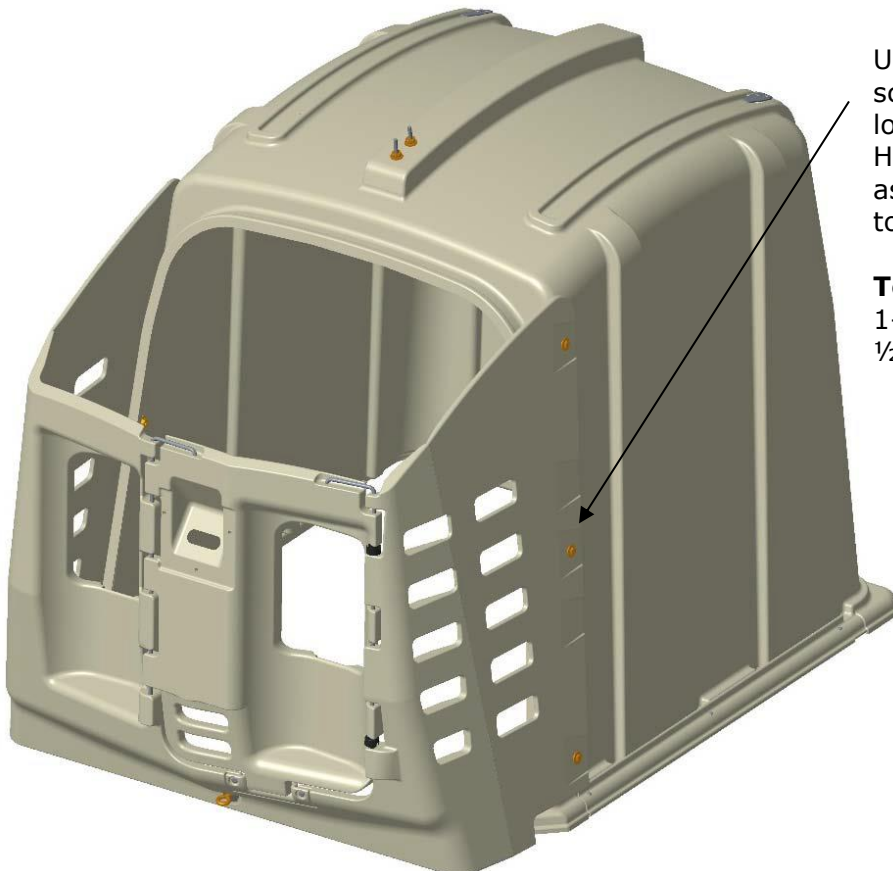
CT-HDWE-007

CT-HDWE-015

**Note:**

Bolt the front to the hutch with bolt on the inside and the nut on outside as shown here.

This keeps calf from being harmed with bolt stud.



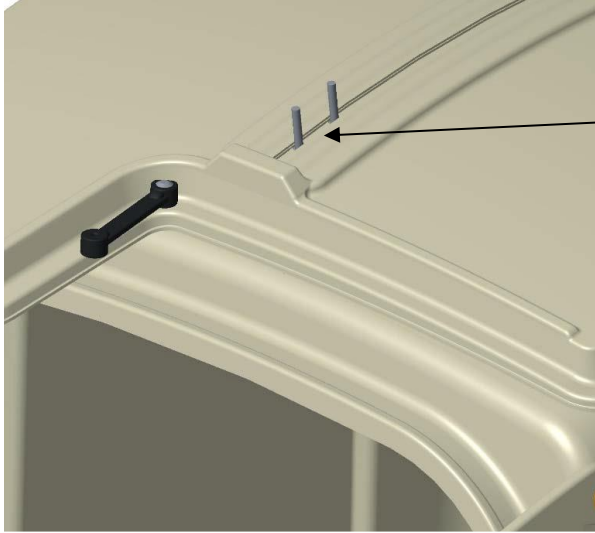
Using (6) CT-HDWE-009 screws, (6) CT-HDWE-015 lock nuts, and (12) CT-HDWE-007 washers, assemble the CT-10001 front to the hutch.

**Tools Needed:**

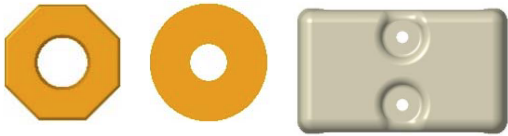
1-2 Open End Wrench  
½ Socket and Ratchet



## Assembly of CT-10002 Cover



Using the pre-routed slot in the CT-10002 cover, place the cover over the CT-10014 locking plat studs.

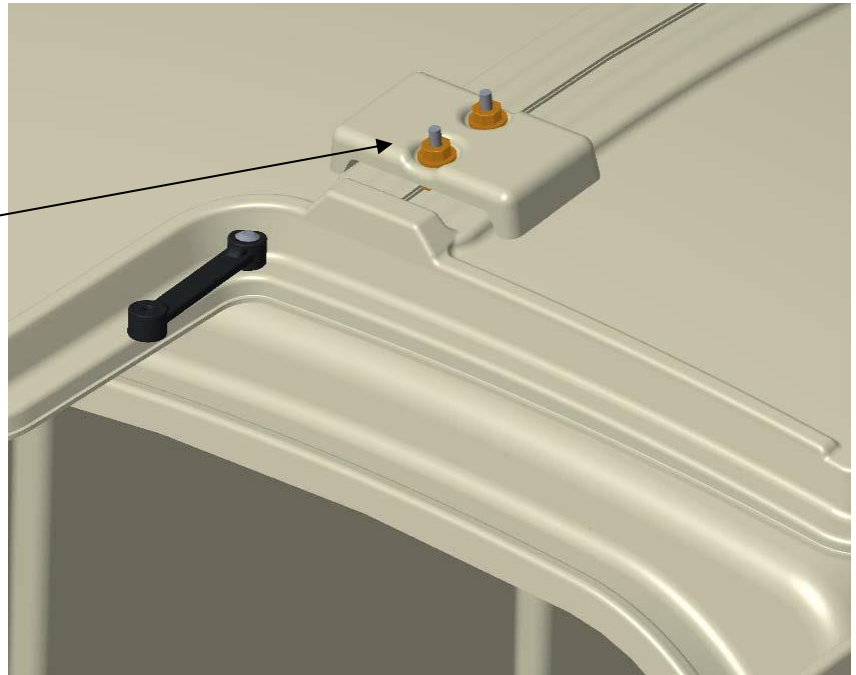


Using (2) CT-HDWE-015 lock nuts, and (2) CT-HDWE-007 washers, assemble the CT-10011 cover lock.

Note: Do not over tighten! Tighten cover lock so that cover slides to the desired resistance.

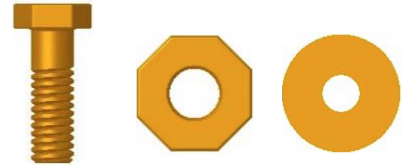
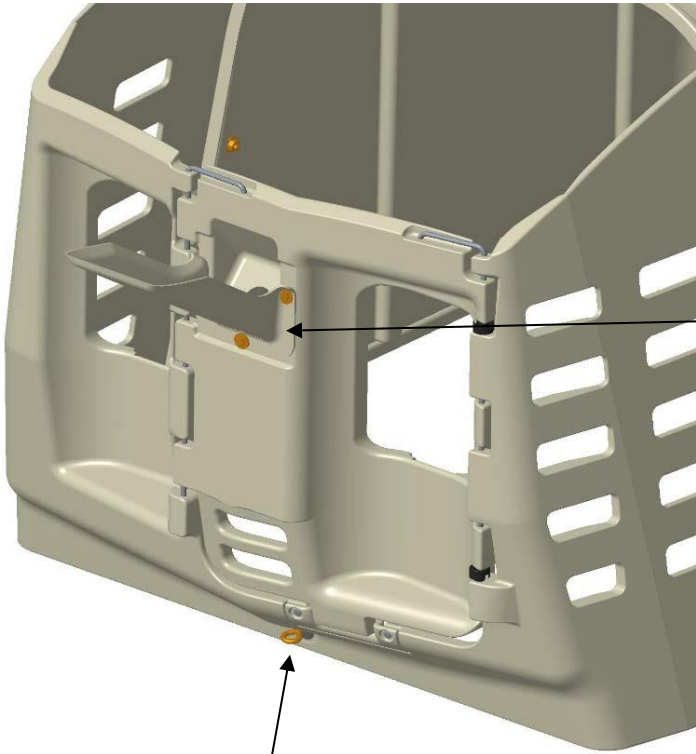
### Tools Needed:

1/2 Socket and Ratchet





## Assembly of CT-10015 Chute Bottle Holder

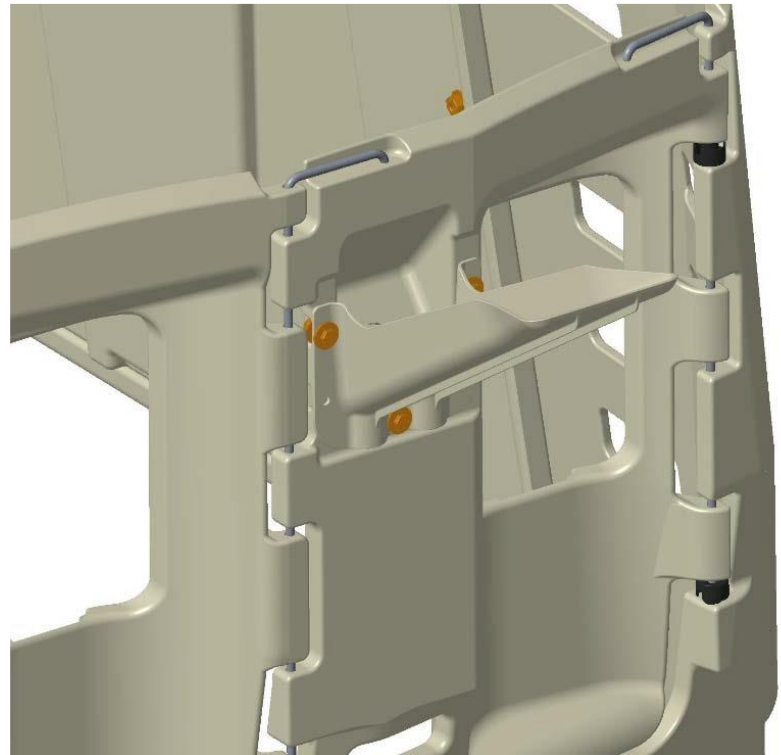


Using (3) CT-HDWE-009 screws, (3) CT-HDWE-015 lock nuts, and (6) CT-HDWE-007 washers, mount the CT-10015 bottle holder to the front.

### Tools Needed:

- 1/2 Open End Wrench
- 1/2 Socket and Ratchet

Using (1) CT-HDWE-019 eyebolt, (1) CT-HDWE-015 lock nuts, and (2) CH-5113 washers, fasten the eyebolt to the front assembly.

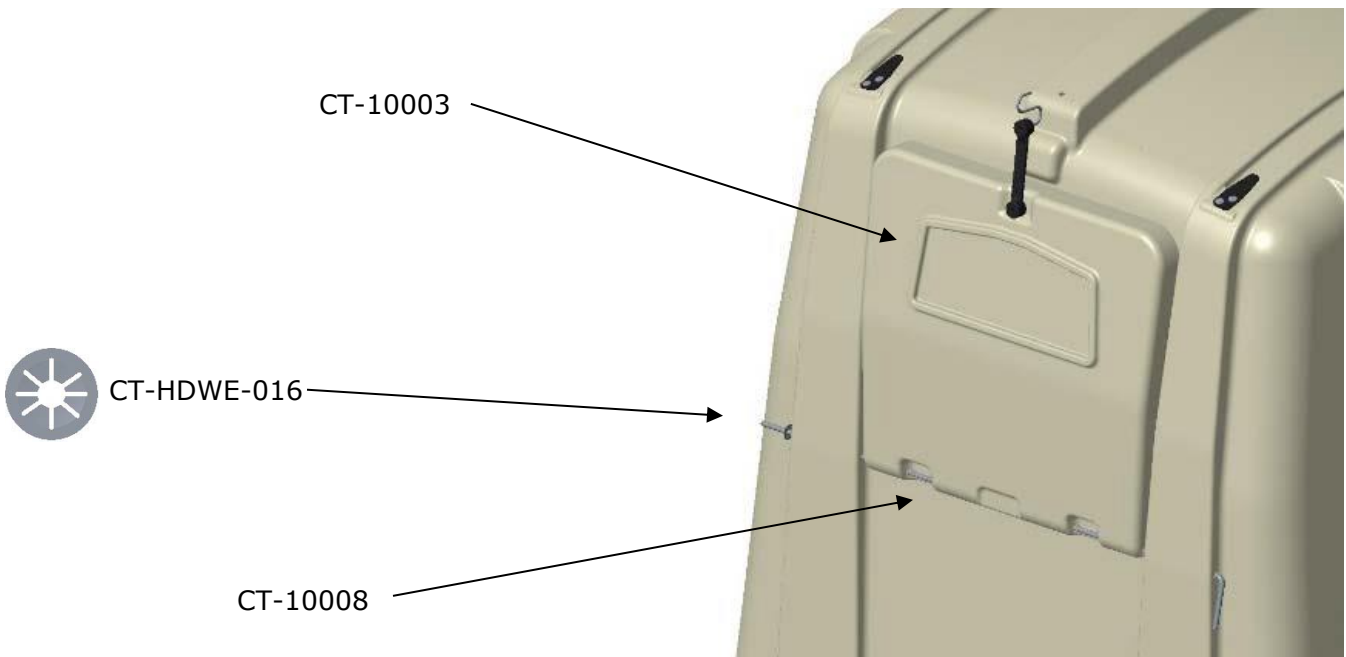




## Assembly of CT-10003 Back Vent Cover



Assemble the CT-10003 back vent cover by sliding the CT-10008 back vent rod thru the pre-drilled holes. Lock the rod in place with the CT-HDWE-016 push nut.





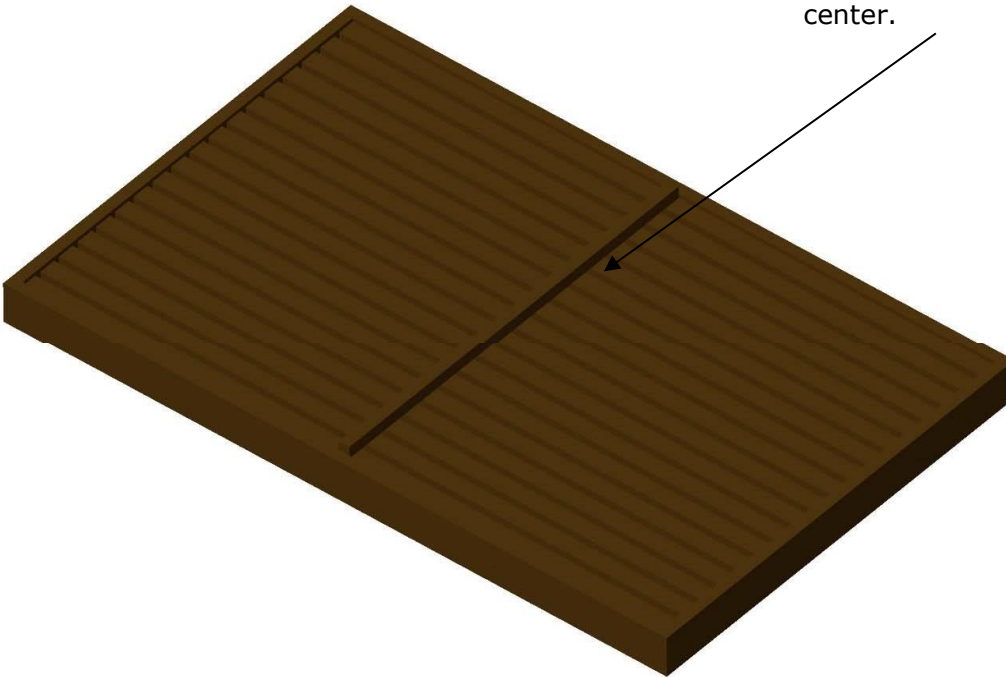
## Assembly of CT-ECS System



Item	Item Number	Description	Qty
1	CT-10004	Corner Hole Down ECS	2
2	CT-10005	Center Hold Down ECS	1
3	CT-HDWE-012	Screw-Flanged Head Lag	14
4	CT-HDWE-013	Eyebolt with Tether, ECS	1
5	CT-HDWE-018	Eyebolt Hold Down	2

Note: Customer is to supply wood and install 2.0" x 2.0" wood brace before assembling hutches to the base.

The brace is to be installed on center.





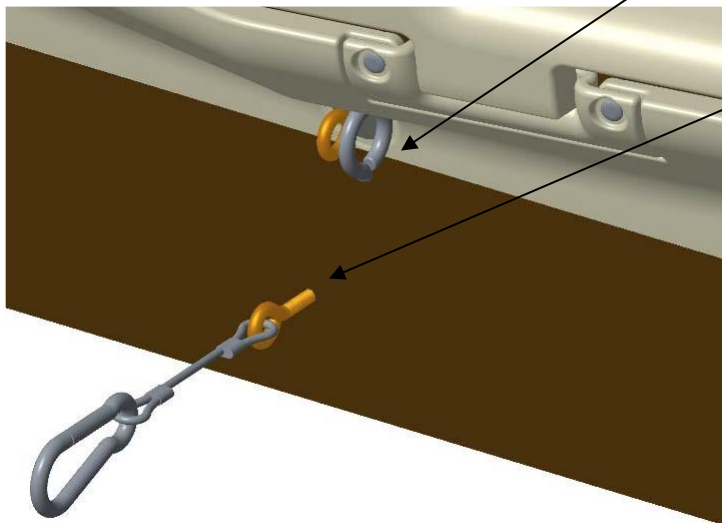


## Assembly of Eyebolt and Tether



CT-HDWE-018

You may need to drill a pilot hole to turn in easier.



To secure the front of the hutch to the base, use the supplied CT-HDWE-013 tether assembly, and the CT-HDWE-018 eyebolt.

Drill a 3/8" hole through the base at the desired location.

Attach the tether assembly with (2) CT-HDWE-007 washers, and (1) CT-HDWE-015 lock nut.

**Tools Needed:**

1/2 Socket and Ratchet  
Drill and 3/8 drill bit



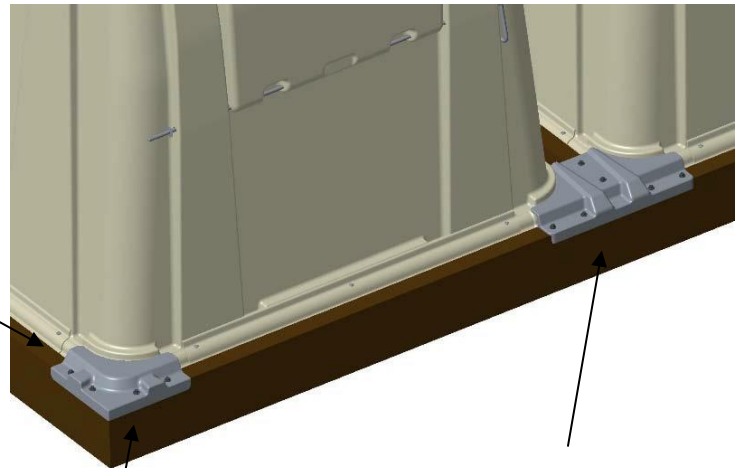


## Assembly of Rear Hutch Hold Downs



To secure the back of the hutch to the base, use the CT-10004, and CT-10005 hold downs. Fasten with the (14) CT-HDWE-012 lag screws.

**Tools Needed:**  
5/16 Socket and Ratchet



CT-10004

CT-10005