



STARTER SYSTEM ASSEMBLY INSTRUCTIONS

FOR: CT-90300S, CT-90401SL, CT-90401SW
CT-90401DL, CT-90401DW

TABLE OF CONTENTS

STARTER UNIT

Starter Unit Assembly 3-5

OPTIONAL COMPONENTS

Covers 7-9

Bases 10-14

TOOLS NEEDED



1/2in (12.7mm)
Socket &
Ratchet

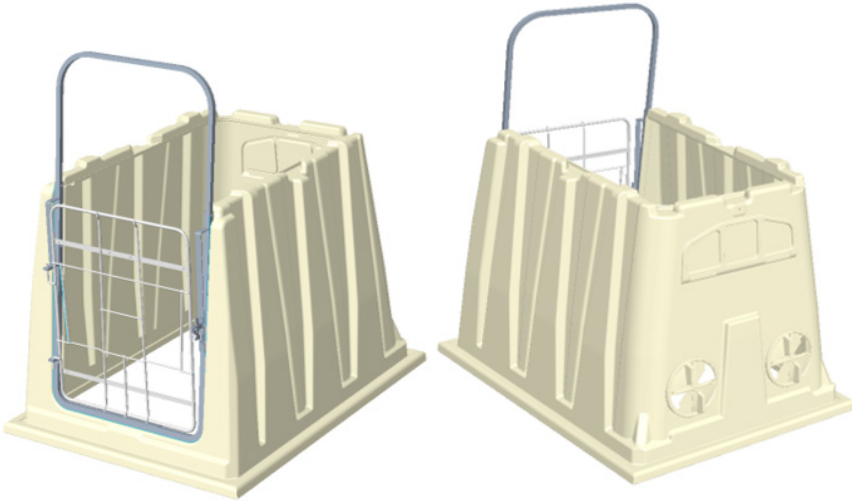
AND



1/2in (12.7mm)
Open End
Wrench

ASSEMBLY INSTRUCTIONS

STARTER UNIT WITH REAR LOWER VENTS



ITEM	Hampel Item #	Description	QTY
1	CT-90300*	Starter Unit, Rear Lower Vents	1
2	CT-9005	Front Frame	1
3	CT-9006	Front Gate	1
4	CT-9007	Upper Loop	1
5	CT-9008	Gate Latch	1
6	CT-7010K	Rear Lower Vent Kit	1
7	CT-HDWE-041	Front Frame Hardware Kit	1
8	CT-HDWE-042	Upper Loop Hardware Kit	1
9	CT-HDWE-043	Gate Latch Hardware Kit	1

*Other Configuration Options Available

STARTER UNIT

WITH REAR LOWER VENTS

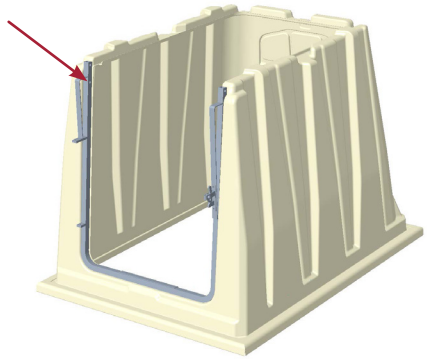
Assemble the Unit

- A. Attach the CT-9008 Gate Latch to the CT-9005 Front Frame using the CT HDWE-043 Gate Latch Hardware Kit

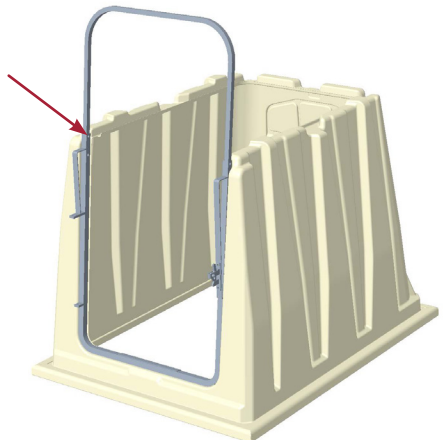
(TIP - install bottom bolt first... using open ended wrench to hold the jam nut in place)



- B. Attach the CT-9005 Front Frame to the Plastic Starter Unit using the CT-HDWE-041 Front Frame Hardware Kit. The bottom of the steel frame slides over the plastic lip and the screw is inserted into the second hole from the top on the steel frame and the large washer and lock nut secure the frame to the plastic. Repeat on other side.

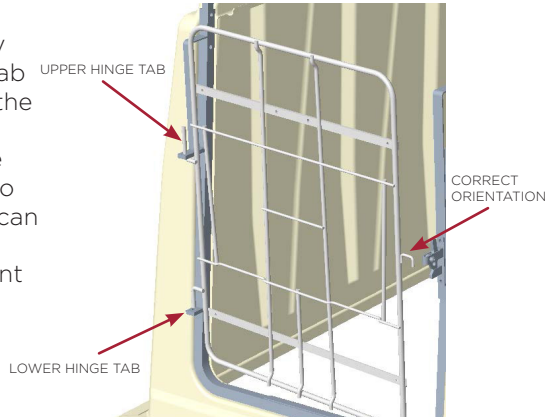


- C. Attach the CT-9007 Upper Loop to the top of the Front Frame using the CT-HDWE-042 Upper Loop Hardware Kit. The Upper Loop slides into the top of the Front Frame and is bolted through the first hole on the top of the Front Frame. Insert the screw outwards through the Front Frame and Upper Loop and secure with the lock nut. Repeat on other side

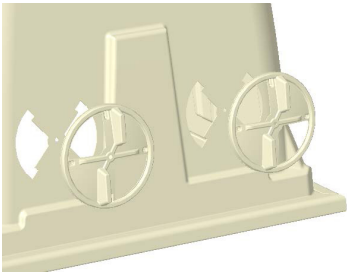


ASSEMBLY INSTRUCTIONS

- D. Install the CT-9006 Front Gate to the Front Frame by inserting the upper hinge tab of the Front Gate through the upper tab on the right side of the Front Frame. Lift the Front Gate all the way up so that the bottom hinge tab can insert into the lower tab on the Front Frame...allow Front Gate to fall back down



- E. Install the CT-7010K Rear Lower Vents using CT-HDWE-011 hardware. Screws should be inserted from the inside out.



OPTIONAL COMPONENTS

TOOLS NEEDED



7/16in (11mm)
Socket &
Ratchet

AND



7/16in (11mm)
Open End
Wrench



DRILL

AND



3/8in (9.5mm)
DRILL BIT

COVERS

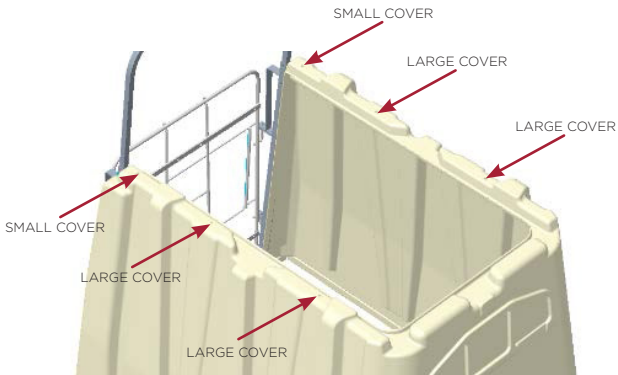


Hampel Item #	Description
CT-90010	Large Cover (Latches Needed)
CT-90020	Small Cover (Latches Needed)
CT-90030	Large Cover with Heat Lamp Hole (latches needed)
CT-9025	Heat Lamp Shield (needs CT-90030 Large Cover to work properly)
CT-9026	Heat Lamp, 250 Watt
CH-9225	Latch

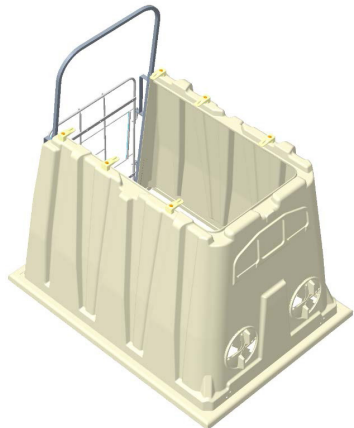
OPTIONAL COMPONENTS

Assembling the Cover Latches

- A. Locate the dimples on top of the Starter Unit and drill a hole using a 3/8" drill bit. Drill the back 4 holes if only using the Large Cover (CT-90010) or Large Cover with Heat Lamp (CT-90030). Drill all 6 holes if using the Large Cover (CT-90010) and the Small Cover (CT-90020).



- B. Install the CH-9225 Latch kits and assemble to the top of the Starter Unit using the supplied hardware. Insert the screw from the topside of the latch.

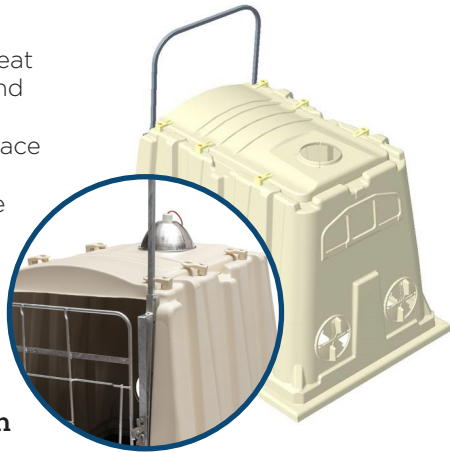


COVERS

- C. Place the Large and Small Cover on top the Starter Unit and lock in place with the previously installed latches. Small Cover can slide back slightly to increase air flow as desired.

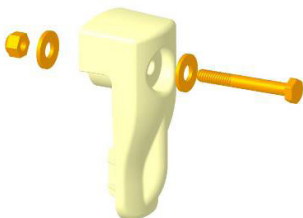


- D. When using a heat lamp, place Large Cover with Heat Lamp hole (CT-90030) and Small Cover on top of the Starter Unit and lock in place with the installed latches. Place the heat lamp in the Large Cover.



Assembling the Rear Latch

- A. Install the CH-9225 Latch using the predrilled hole directly above of the Flat Back Door. Insert the screw from the top-side of the latch.



OPTIONAL COMPONENTS



TOOLS NEEDED



7/16in (11mm)
Socket &
Ratchet

AND



7/16in (11mm)
Open End
Wrench



DRILL

AND



3/8in (9.5mm)
DRILL BIT

Single or Double Base



ITEM	Hampel Item #	Description	QTY
1	CT-90300*	Starter Unit, Rear Lower Vents	1 or 2
2	CT-9009	Single Base	1
3	CT-9010	Double Base	1
4	CT-9011	Base Legs	4
5	CT-9013	Base Hinge	2 or 4
6	CT-9014	Starter Unit Hinge	2 or 4
7	CT-9015	Base Wheels	4
8	CT-10067-1	Full Plastic Floor	1
9	CT-10068	Half Plastic Floor	1
10	CT-HDWE-044	Unit Hinge Hardware	2 or 4
11	CT-HDWE-045	Base Hinge Hardware	2 or 4
12	CT-DHWE-046	Leg/Wheel Hardware	4
13	CT-DHWE-047	Leg Pocket Hardware	4

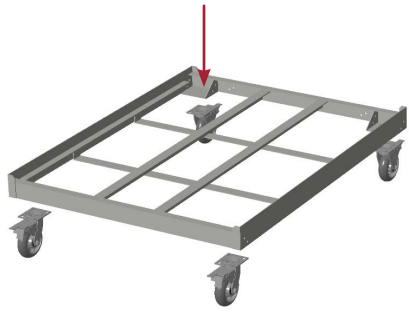
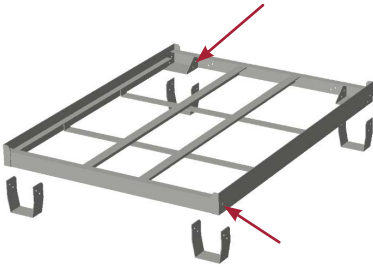
*Other Options Available

OPTIONAL COMPONENTS

Assemble the Legs/Wheels

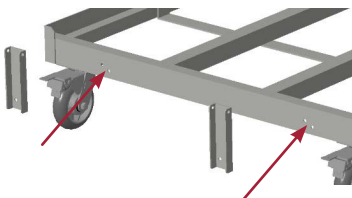
- A. Align the mounting holes of the CT-9011 Legs with the holes in each corner of the base (Single or Double), attach using the CT-HDWE-046 Leg / Wheel Hardware kit.
- Screws should be inserted from the outside of the base for the legs.
 - Screws should be inserted from the wheel plate side first, then through the holes in the plate on the underside of the base.

(TIP - it might be easier to tip the base on its side to have easier access to the underside - be mindful of the weight when lifting.)



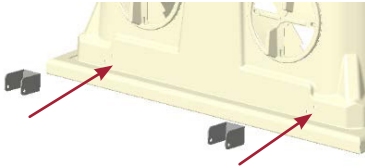
Assemble the Hinges

- A. Attach the CT-9014 Base Hinge to the holes on the back side of the base using the CT-HWE-045 Base Hinge Hardware Kit.



Single Unit or Double Base

- B** Attach the CT-9013 Unit Hinge to the holes on the back side of the plastic Starter Unit using the CT-HDWE-044 Unit Hinge Hardware kit. If the holes are not pre-drilled, use the dimples and the 3/8" drill bit to create the holes.

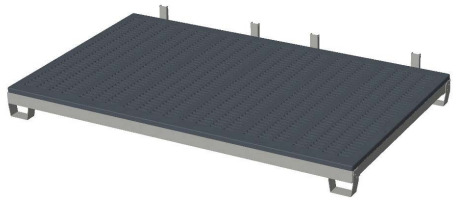


- Install the screws, with washers, from the inside of the plastic unit.

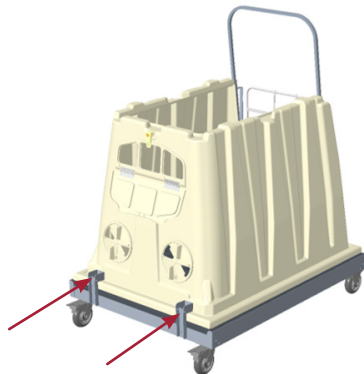


Install Floor and Connect Unit

- A.** Place the CT-10067-1 (Full Floor) or the CT-10068 (Half Floor) onto the base



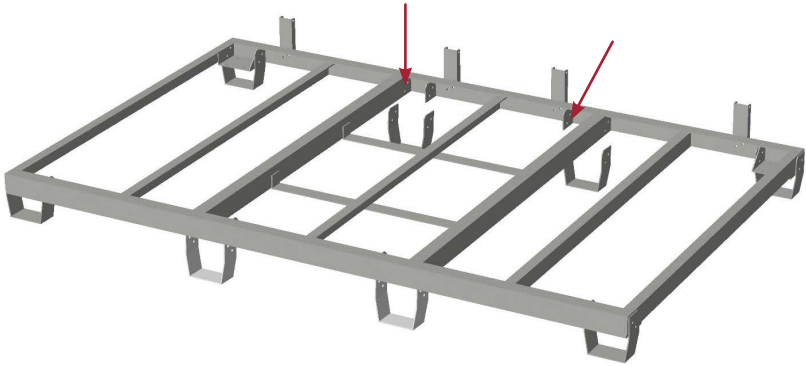
- B.** Connect the plastic Starter Unit using the long screw in the CT-HDWE-044 Unit Hinge Hardware Kit to connect the hinge on the unit to the hinge on the base.



OPTIONAL COMPONENTS

Install Optional Fork Pockets - Double Base

- A. Align the mounting holes of the CT-9011 Legs with the holes at each location towards the center of the base. attach using the CT-HDWE-047 Leg Fork Pocket Hardware kit.
- The long screw is used to connect the leg through the tube.







W194 N11551 McCormick Drive
Germantown, Wisconsin 53022

Calf-Tel.com
1-800-558-8558
Made in the U.S.A.