



CT-5000-INST Tether Kit Installation Instructions

Calf-Tel II Tether Kit Bill of Material:

Item	Item Number	Description	Qty
1	CT-HDWE-040	Cable, 43" Tether Cable	1
2	CH-5120	Collar, Black Nylon, 1" x 24"	1
3	CH-3261	Chain, w/Snaps	1
4	CT-9100	Parts Kit, 5/16" (Eyebolts, Washers, Nuts)	1
5	CT-5000-INST	Instructions, Tether Installation, Calf-Tel II	1

Installation Instructions:

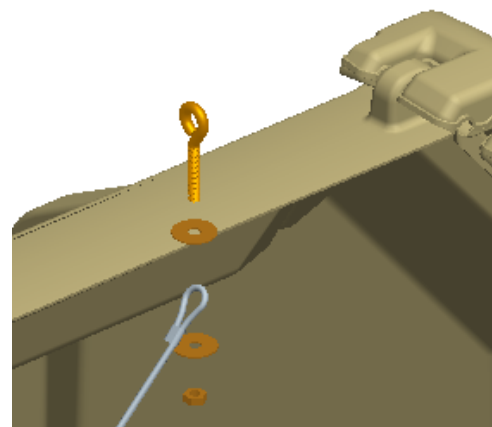
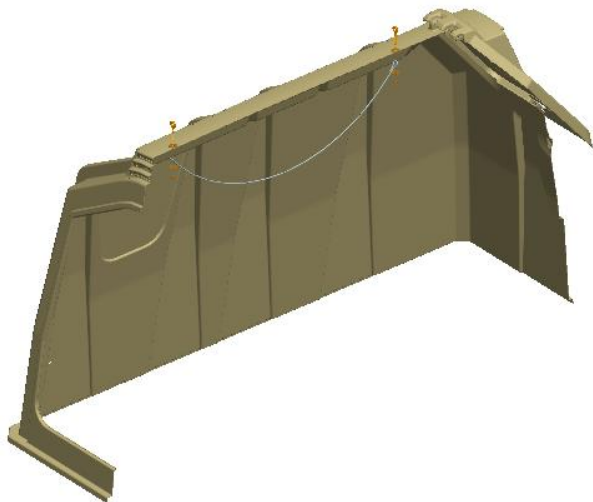
Step 1: Using the spots located on the top ridge of the Calf-Tel II, drill (2) 3/8" holes.

Step 2: Place a washer onto an eyebolt and insert the eyebolt into each hole.

Step 3: On the inside of the hutch, place the loop end of the cable over the previously inserted eyebolt, and secure with another washer and nut. See Detail View 1.

Step 4: Repeat with the opposite end of the cable.

Step 5: Snap one end of the chain onto the cable. The other end of the chain will snap onto the collar once the collar is on the calf.



Detail View 1