



CTC-1011A
8/16 Group Yard – Slanted Front
54/98 MultiMax
Assembly Instructions



Bill of Material: (plastic hutch not included)

Item	Item Number	Description	Qty
1	CTC-1016	Slanted Front	1
2	CTC-1017	Side Panel	3
3	CTC-1018	Side Waterer Panel	1
4	CTC-1019	Universal Hutch Connector	2
5	CTC-1020	Rods	6
6	CTC-1028	Plastic Hanging Trough - 16 Gal Beige	2



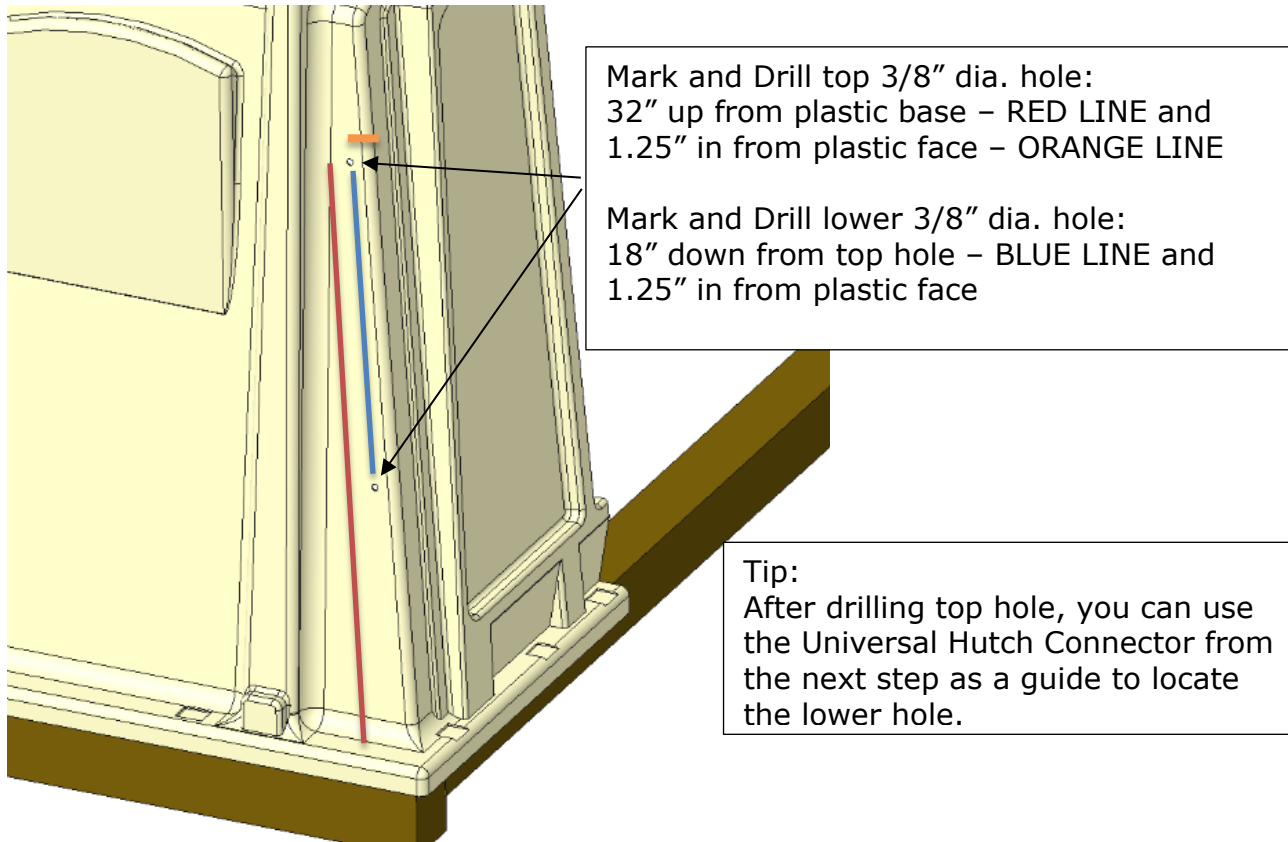
Tools Needed:

1. 1/2 in Socket & Ratchet
2. 1/2 in Open End Wrench
3. 3/8" Drill Bit
4. Drill
5. Rubber Mallet

Assembly:

Step 1:

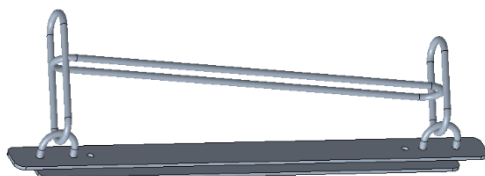
- Using the 3/8" drill bit, mark and drill holes in the side of the plastic unit...
(if they are not already dimpled or drilled)



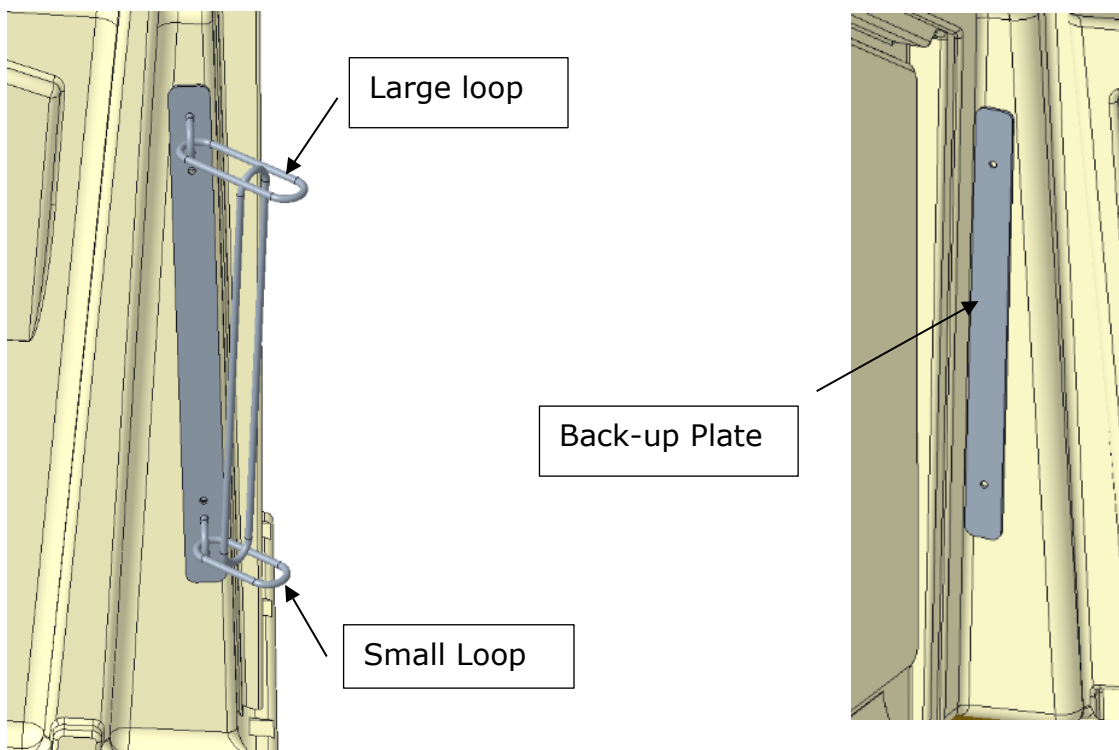


Step 2:

- Locate the Universal Hutch Connector (**CTC-1019**)
(hardware and back-up plate should be attached to the part) (CTH-HDWE-006)



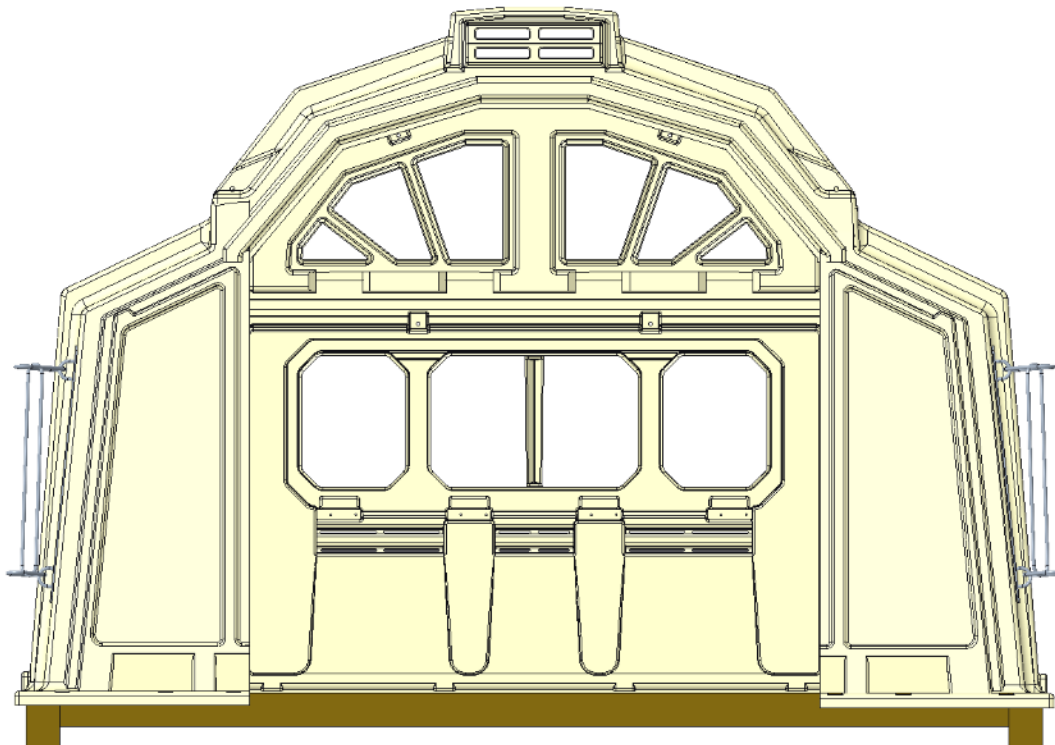
- The Connector should have the hardware and back-up plate attached.
 - Remove the hardware using the 1/2" socket and wrench.
 - Align the top hole of the Connector (large loop should be on top) with the top hole previously drilled in the Hutch.
 - Push the 1" hex head screw through the connector and the hole in the plastic
 - Reach around to the inside (a helper may make it easier) and align the backup plate with the screw and then thread on the lock nut...tighten.





Step 3:

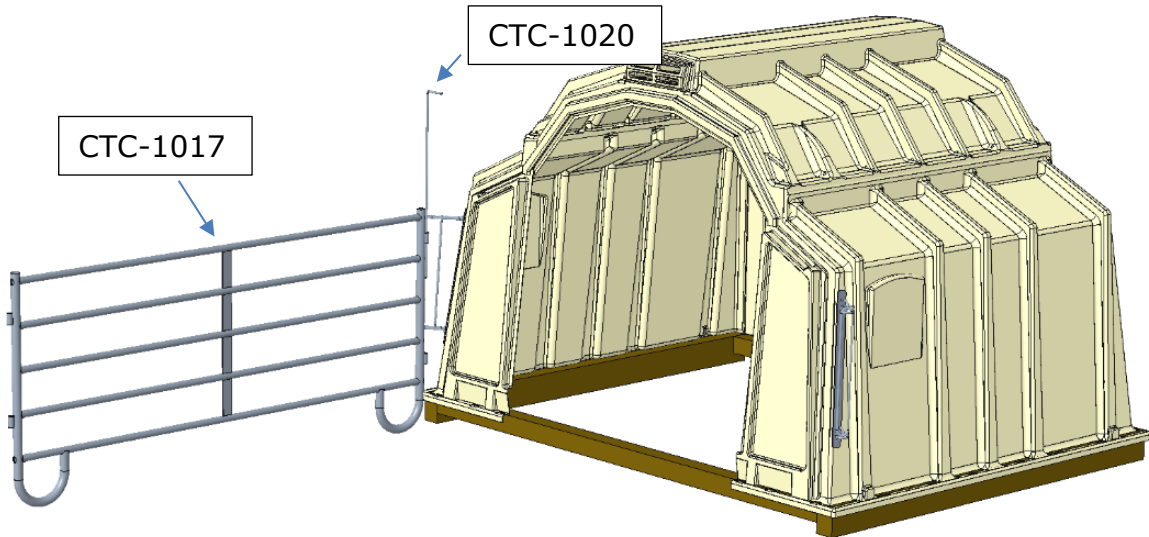
- Repeat Steps 1 and 2 on opposite side of the hutch.
- Universal Hutch Connectors are now on both sides of the front of the hutch.



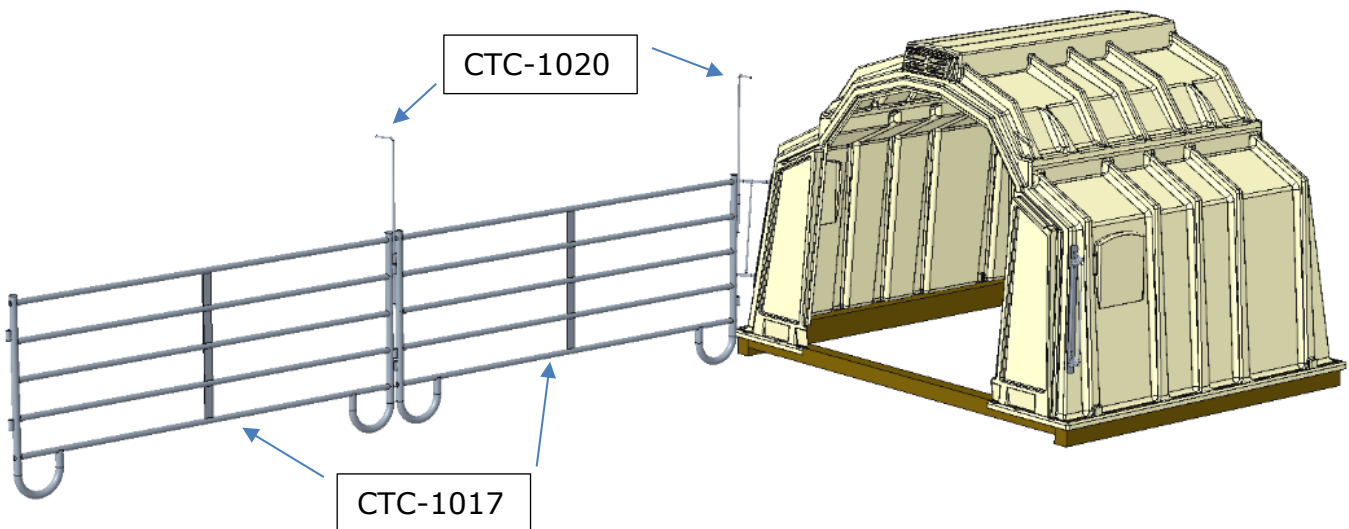


Step 4:

- Start connecting the Side Panels (**CTC-1017**)
- The 4 side panels can be put in any location wanted.
 - The side panels have rod tubes on the end for assembly
 - Start with the end of the panel that the rod tubes are further apart, and connect those to the Universal Hutch Connector



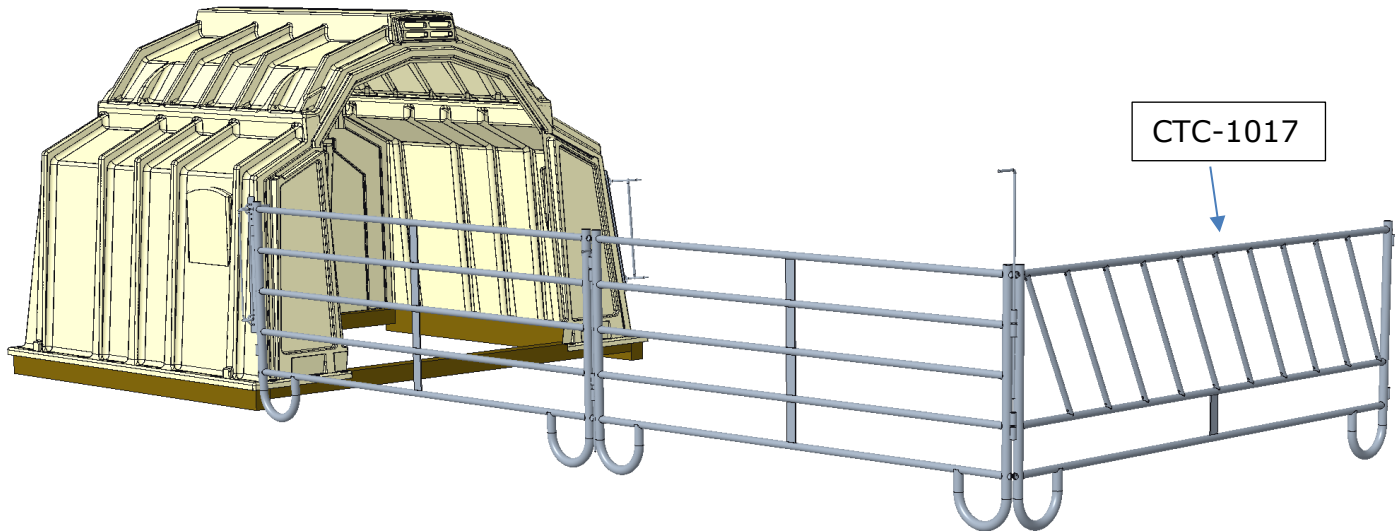
- Continue with another Side Panel with the rod tubes facing the same direction as the previous panel





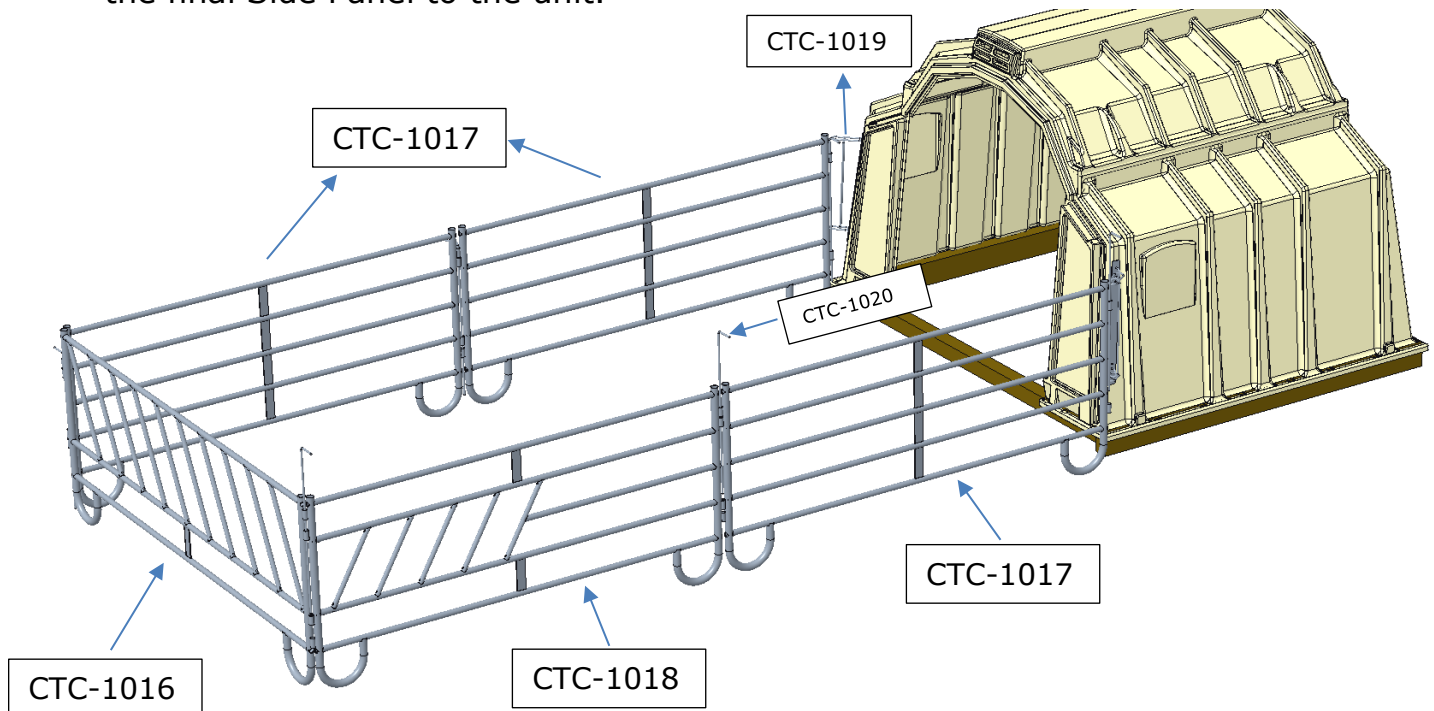
Step 5:

- Connect the Slanted Front (**CTC-1016**) – openings should be slanted from top left down to the right



Step 6:

- Continue with connecting the Waterer Side Panel (**CTC-1018**) to the front, and then the final Side Panel to the unit.





Step 7:

- Hang the Plastic Troughs on the Front (**CTC-1028**)
 - They hook to the 2 lower horizontal bars of the Slanted Front

