

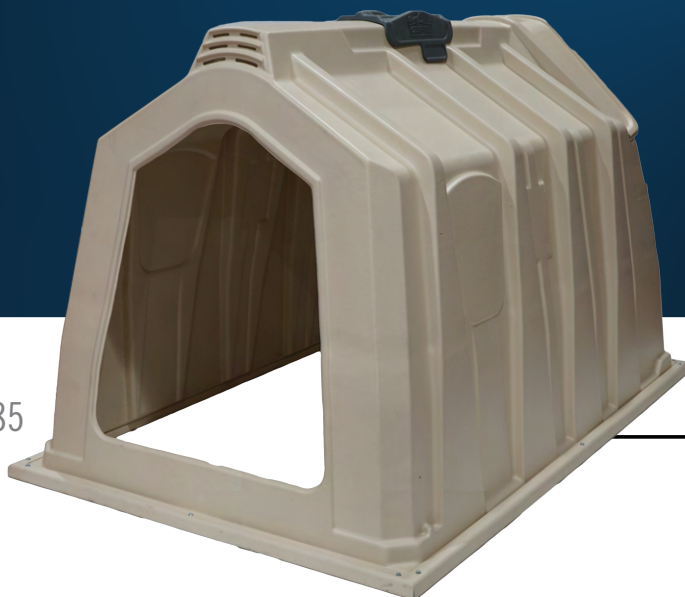
# XL-XTRA!

GIVE YOURSELF THE **X** FACTOR

35 | 85

3.5 m<sup>2</sup> of Interior Space

8x5 Exterior Footprint



Calf-Tel has redesigned the 35185 XL size calf hutch with **XTRA** features you've been looking for. Have your hutch, your way with fully **customizable** features that will reinvent how you manage your calf operation!

INTERIOR SIZE IN M <sup>2</sup>	3.5
IMPERIAL DIMENSIONS	8' x 5'
OUTSIDE L x W x H	247 x 157.5 x 155 cm 97.25" x 62" x 61"
INSIDE USABLE CALF SPACE L x W x H	243 x 146 x 136 cm 95.5" x 57.5" x 53.5"
WEIGHT	43 kg   94 lbs



**NEW Extrusion Base Makes the XL-Xtra Virtually Indestructible!**

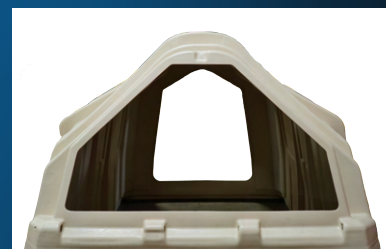
## Mega Vent Options



4 Window



Wire Calf Keeper



Full Open

## COMPATIBLE CONTAINMENT FENCES



Classic Wire Fence



Elite Single Fence



Elite Pairing Fence



Elite Access Front with Wire Fence



Classic Access Front with Wire Fence



Elite Direct Attach Hutch Access

# 35|85 **AIR!** Mega Vent

Well-ventilated calf housing is critical to the well-being of your herd. Without proper airflow, your calves would be at the mercy of major respiratory issues, heat stroke and long-term health problems. How do we know this? We've seen it.

**Mega Vent** - the largest adjustable ventilation opening on the market for maximum airflow, breathability and comfort.



OPTIONAL ADJUSTABLE TOP RIDGE VENT - ADDED BREATHABILITY AND VENTILATION



OPTIONAL WEATHER GUARD - PROTECTS CALF FROM THE ELEMENTS



ENHANCED RIBBING WITH STRUCTURED FLEXIBILITY AND RIGIDITY



OPTIONAL LOWER VENTS; AVAILABLE WITH OR WITHOUT **4 VENT OPENINGS**

## CUSTOMIZE YOUR HUTCH

Base Options	Front Opening Options	Rear Door Options	Optional Feed Door	Rear Vent Options	Optional Bottle Holder	Mega Vent Options	Optional Mega Vent Door	Optional Weather Guard	Optional Ridge Vent Top Cap
 Piped Base	 Full Open	 Flat Back Door	 Left	 4 Rear Vents	 Chute	 4 Windows			
 Extrusion Base	 Right Entry	 Bedding Door	 Right	 No Vents Cut	 Wire	 Full Open			
	 Left Entry	 Mega Vent Door				 Wire Calf Keeper			

